

2021 Hyundai

ELANTRA



Your life has many facets. The new Elantra does, too.

¹Claim based on comparison of specifications on manufacturer websites. ²Complimentary maintenance includes Hyundai-approved oil and oil filter change (except for electric vehicles and fuel cell electric vehicles) plus tire rotation at normal factory-scheduled intervals for 3 years or 36,000 miles, whichever comes first. This offer valid only for new 2020-2021 Hyundai models purchased or leased on or after February 1, 2020 (excluding 2021 NEXO). See your Hyundai dealer for further details and limitations. ³The Hyundai Near Field Communication Digital Key requires a compatible Android smartphone and appropriately equipped 2021 Hyundai Elantra. Not all Android devices are compatible. Elantra vehicle must be equipped with a smart key with push button start, wireless device charging and Audio Video Navigation System 5.0 (or newer) or Display Audio 2.0. Lock/unlock functionality works on the front doors only. See your Owner's Manual or visit your local Hyundai dealer for details. ⁴Requires active Blue Link subscription with Remote package. Not available on Elantra SE. ⁵An active Blue Link subscription is required for the web search function to operate. Vehicle commands do not require a Blue Link subscription.

ELANTRA Limited in Portofino Gray

One look at the precision-sculpted shape of the all-new Hyundai Elantra tells you it's a sedan that's as multi-faceted as you are. With its wide cascading grille, stylish lighting, cut-diamond surfaces and lowered coupe-like profile, our next Elantra is a stunning design certain to draw the right kind of attention in your direction.

Step inside, and you're greeted by a sleek, sensuous cabin typically reserved for luxury sedans. It's surprisingly spacious, too, with best-in-class passenger volume and total interior volume in the compact car segment.¹ Settle into the driver's seat, and you instantly sense how the new Elantra was designed around you with a cockpit-style orientation that is both ergonomic and inviting. Turn on the ignition, and you turn on a level of technology that's so advanced, it's practically future-proof.

Segment-first features like the available Hyundai Digital Key and Dynamic Voice Recognition lead a deep roster of technologies that create seamless convenience. That futuristic panel atop the center console? It's an available 10.25" display that uses its class-leading dimensions¹ to create a split-screen command center for Elantra's sophisticated audio, climate and available navigation systems.

Advanced SmartSense driver-assist technologies and an all-new body engineered for crash protection uphold Hyundai's reputation for building cars that consistently earn the industry's highest safety ratings. The result of all this innovation is a feeling of confidence backed by America's Best Warranty, Hyundai Assurance and our Hyundai Complimentary Maintenance program.²



Hyundai Digital Key

A new Hyundai Digital Key unlocks Elantra's front doors and starts the engine using your compatible Android™ smartphone.³ Multiple drivers can be assigned a digital key that instantly retrieves their personalized radio presets, instrument cluster display preferences and more.⁴

Dynamic Voice Recognition

This breakthrough convenience lets you activate climate controls, select SiriusXM channels and more using conversational (rather than truncated) voice commands. You can even ask your car questions like 'How is Amazon's stock doing today?' or 'When is the next Red Wings game?'⁵

DEALER ePROCESS



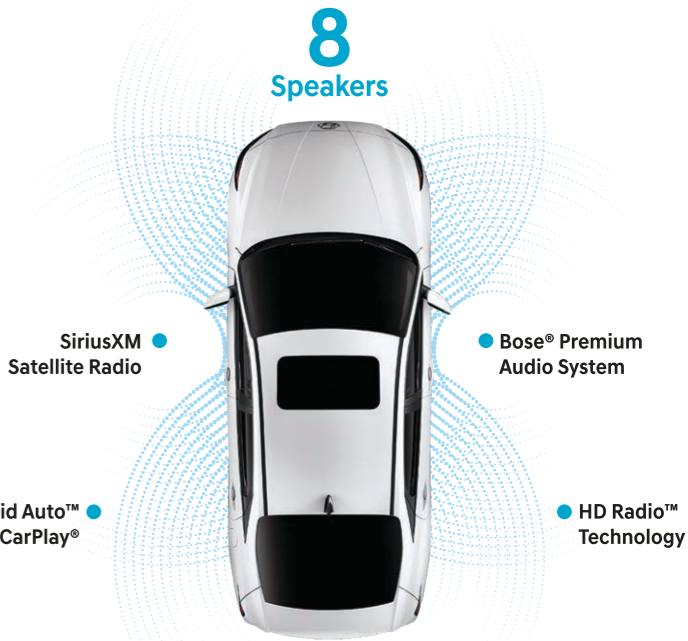
*The 2021 Hyundai Elantra includes 3 years of the Blue Link Connected Care, Remote and Guidance (factory-equipped navigation required) packages. All trials require an active Blue Link subscription agreement subject to the Connected Services Terms and Conditions. Three-year term starts from the new vehicle date-of-first-use, is available for new vehicle purchases and leases, and is transferable to subsequent owners subject to the Terms and Conditions. Only use Blue Link and corresponding devices when safe to do so. Cellular and GPS coverage is required. Features, specifications and fees are subject to change. For more on details and limitations, visit HyundaiUSA.com or your authorized Hyundai dealer. **Claim based on comparison of specifications on manufacturer websites.

Feel the connection.

Hyundai designers infused the new Elantra with customizable features that let you connect with your car in deeply satisfying ways. The cabin's available ambient lighting can be changed to any of 64 colors. Hyundai Blue Link® is also available¹ for pre-heating or pre-cooling a cabin that features best-in-class interior volume.²

Behind the wheel, a low and wide connection from the door to the high center console wraps around the driver to convey a sporty sense – one that's punctuated by Elantra's unique cornering grip bar. A segment-first 10.25" digital instrument cluster and the largest navigation screen in the compact car class² are available under a single cover of glass, providing all the information you need at a glance. Even the cupholders have been redesigned for a precision feel, adjusted to fit the depth of your drink's container.

Now grab the shifter and put the power of Hyundai Smartstream technology in your right hand. Turn the steering wheel or touch the brakes, and it's clear Elantra is a sedan that can handle itself in a corner and make you feel connected to the road. Finally, look up. Opening the available power sunroof puts you in touch with the outside world.



10.25" digital LCD instrument cluster



10.25" navigation display



Power tilt-and-slide sunroof



Hands-free smart trunk release



2020 Hyundai Elantra
 2020 IIHS Top Safety Pick when equipped with Forward Collision-Avoidance Assist and available LED headlights

¹Forward Collision-Avoidance Assist (FCA) helps the driver avoid collisions with oncoming traffic by applying the opposing front brake only when the lane markings are clearly visible on the road. There are limitations to the function, detection, range and clarity of the system. FCA may not function correctly if one or more of its sensors is damaged, dirty or covered, or if weather conditions (heavy rain, snow or fog) are interfering with sensor operation. FCA will not prevent loss of control. This driver assistance system is not a substitute for safe driving. See Owner's Manual for further details and limitations. ²Blind-Spot Collision-Avoidance Assist (BCA) helps prevent collisions when exiting parallel parking spots. It can alert the driver to a potential hazard. Never rely exclusively on BCA when exiting a parking space, as it is not a substitute for attentive driving. Always look over your shoulder and use your mirrors to confirm clearance. There are limitations to the function, detection, range and clarity of the system. BCA may not function correctly if one or more of the parking sensors is damaged, dirty or covered, or if weather conditions (heavy rain, snow or fog) are interfering with sensor operation. See Owner's Manual for details and limitations. ³When your vehicle is parked, Safe Exit Warning (SEW) can alert occupants planning to exit if a detected vehicle is approaching from behind. SEW does not work in all situations and is not a substitute for driver or passenger attentiveness. Always be aware of your surroundings and attentive of approaching vehicles. When the vehicle is parked and the driver has exited the vehicle, Rear Occupant Alert can alert the driver to the presence of passengers or pets still in the rear seats of the vehicle. Never leave a child or pet unattended in a vehicle. See Owner's Manual for important details and limitations. ⁴To qualify for 2020 TOP SAFETY PICK, a vehicle must earn good ratings in the driver-side and passenger-side small overlap front, moderate overlap front, side, roof strength and head restraint tests. It also must earn an advanced or superior rating for vehicle-to-vehicle and vehicle-to-pedestrian front crash prevention and an acceptable or good headlight rating. ⁵EPA estimates for comparison only. Mileage may vary. Your actual mileage will vary with options, driving conditions, driving habits and the vehicle's condition. ⁶Safety features vary by model. For details, refer to the Features chart in the back of this brochure or visit HyundaiUSA.com.

You know a smart move when you see it.

If you've read the list of safety features offered on the all-new Elantra, then you already know: You don't have to be rich to drive a car loaded with state-of-the-science safety innovations. You simply have to be smart. Equipped with an array of Hyundai SmartSense technologies, Elantra helps protect you wherever you drive.

Its Forward Collision-Avoidance Assist automatic braking technology is enhanced for 2021 to detect potential collisions when turning left into intersections.¹ Blind-Spot Collision-Avoidance Assist has been enhanced to monitor vehicles as far as two lanes over to help prevent collisions when exiting a parallel parking spot.² And with Safe Exit Warning and Rear Occupant Alert, Elantra makes exiting your car safer for you and your passengers.³ No wonder Elantras equipped with Forward Collision-Avoidance Assist and specific headlights have earned an IIHS Top Safety Pick every year for the last 10 consecutive years.⁴

Elantra's powertrain is smart, too. For 2021, an improved Smartstream 2.0 Atkinson engine is paired with a new Smartstream Intelligent Variable Transmission to help boost Elantra SE's fuel economy to an EPA-estimated 37 MPG (combined city/highway).⁵ And how's this for smart moves? With the Drive Mode Select feature, you can choose the shifting strategy that suits your preferred mode of driving: Normal, Smart or Sport. So now that you know how smart the all-new Elantra is, your next move should be a no-brainer.



Rear Cross-Traffic Collision-Avoidance Assist



Rearview camera with dynamic parking guidelines

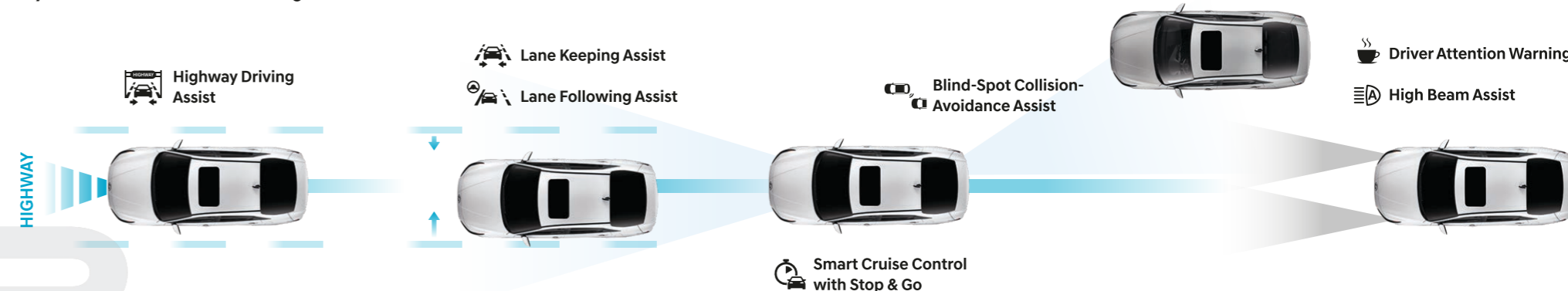


Forward Collision-Avoidance Assist with Pedestrian Detection



Safe Exit Warning

Hyundai SmartSense Technologies⁶



Upgrade your mobile device. With Hyundai Blue Link.

The new Elantra might just be the ultimate way to upgrade your mobile device. Thanks to our award-winning Blue Link®, Elantra is available with the latest generation of connected car technologies. A comprehensive suite of safety, convenience and remote features let you interact with your car – and the rest of your digital life – in powerful, practical ways.

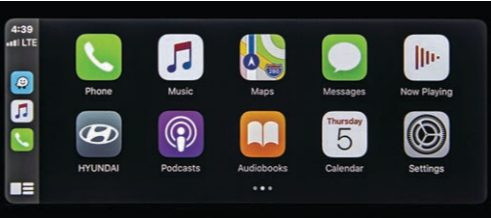
If you're like most Hyundai owners, the Blue Link features you'll use most are its remote capabilities.¹ With the MyHyundai app, you can start your car's engine and adjust the climate controls from your office or kitchen using your smartphone, Amazon Echo® or Google Home™ virtual assistant.² You can also remotely activate Elantra's available heated front seats and tune the radio presets by sending your personal profile to your Elantra ahead of time.³ Want to remotely check and see if you've left the windows open? The MyHyundai app lets you check by consulting your smartphone.

For 2021, Elantra's standard Apple CarPlay®/Android Auto™ is available with the segment's first wireless connection.⁴ Elantra's Bluetooth® music streaming has also been enhanced – you can now connect two phones to the audio system simultaneously. And to keep everyone powered up, Elantra offers an available wireless charging pad⁵ and dual USB ports.

¹ Requires active Blue Link subscription with Remote package. ² Amazon, Alexa and all related logos and motion marks are trademarks of Amazon.com, Inc. or its affiliates. Google Assistant and Google Home are trademarks of Google LLC. ³ Requires properly equipped vehicle and Blue Link subscription with Remote package. ⁴ Claim based on comparison of specifications on manufacturer websites. Apple CarPlay® is a registered trademark of Apple Inc. Android Auto™ is compatible with Android™ phones running Android 5.0 or higher. Android Auto may not be available on all devices and is not available in all countries or regions. Additional apps may be required. Android and Android Auto are trademarks of Google LLC. ⁵ Qi wireless charging function is based on smartphone compatibility and/or specific accessory cases. ⁶ Blue Link agents will contact existing emergency service responders. ⁷ Requires active Blue Link subscription with Guidance package and vehicle equipped with navigation system.



ELANTRA Limited in Portofino Gray



Apple CarPlay



Wireless charging pad

DEP
DEALER ePROCESS



Automatic Emergency Assistance

Blue Link Connected Care offers 24/7 SOS Emergency Assistance and Automatic Collision Notification that calls for help if you're in an accident where airbags deploy.⁶



On-Demand Diagnostics

Run vehicle diagnostics from your Hyundai's touchscreen, report issues at the press of a button and receive Monthly Vehicle Health Reports or maintenance reminders by email.



Destination Send-to-Car

Use your smartphone to find restaurants or points of interest that may not be updated on your vehicle's maps, then send the destination to your Elantra's navigation system.⁷



Car Finder

Our Car Finder smartphone app feature lets you navigate your way back to your Elantra after a day of downtown shopping or an evening spent rooting for your favorite team.



Remote Controls

Use your smartphone, your home assistant or your wearable device to remotely start your Elantra's engine, unlock the car doors, set the car's cabin temperature and more.



Remote Status Enhancements

Wondering how much fuel is in your car's tank? If your Elantra's trunk is closed or the doors are unlocked? Your MyHyundai app knows the answers to these questions and more.¹

ELANTRA
SE



Popular Features

- Forward Collision-Avoidance Assist with Pedestrian Detection
- Lane Keeping Assist and Lane Following Assist
- Blind-Spot Collision-Avoidance Assist
- Rear Cross-Traffic Collision-Avoidance Assist
- Wireless Apple CarPlay®/Android Auto™
- 8” touchscreen display AM/FM/HD Radio™
- 15” alloy wheels

ELANTRA
Limited



Popular Features

- High/low-beam LED headlights
- Leather-trimmed seating surfaces
- 10.25” high-resolution navigation system
- Highway Driving Assist
- Dynamic Voice Recognition
- Parking Collision-Avoidance Assist – Reverse
- Parking Distance Warning – Reverse
- 17” alloy wheels

Smartstream 2.0L MPI 4-Cylinder

hp	147
lb-ft	132

¹EPA estimates for comparison only. Mileage may vary. Your actual mileage will vary with options, driving conditions, driving habits and the vehicle's condition.

ELANTRA
SEL



Popular Features

- Proximity Key entry with push button start
- Dual automatic temperature control
- SiriusXM Satellite Radio with 6 speakers
- Sunvisors with illuminated vanity mirrors and extensions
- Blue Link® Connected Car System (3 years complimentary)
- Hands-free smart trunk release
- 16” alloy wheels

SEL Convenience Package

Forward Collision-Avoidance Assist with Pedestrian, Cyclist and Junction-Turning Detection	Leather-wrapped steering wheel and shift knob
10.25” digital instrument cluster display	Wireless charging pad
Smart Cruise Control with Stop & Go	Heated front seats
Electronic Parking Brake	Heated side mirrors

SEL Premium Package ^[requires SEL Convenience Package]

Power tilt-and-slide sunroof	LED taillights
Side mirrors with LED turn signal indicators	60/40 split-folding rear seats with armrest and cupholders
Bose® 8-speaker premium audio system	Power driver seat with adjustable lumbar support
Dark chrome exterior accents	Hyundai Digital Key
Chrome window belt molding	17” alloy wheels

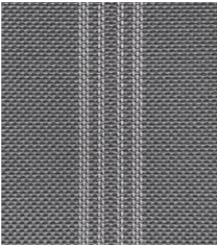
ELANTRA SE
EPA MPG Estimates (City/Highway/Combined)¹

33/43/37 ^{Smartstream Intelligent Variable Transmission}

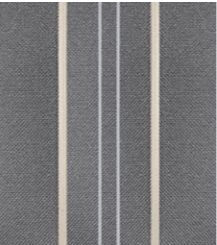
ELANTRA SEL/Limited
EPA MPG Estimates (City/Highway/Combined)¹

31/41/35 ^{Smartstream Intelligent Variable Transmission}

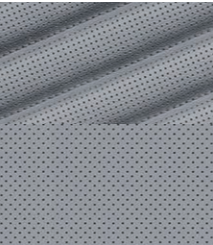
Interior Colors



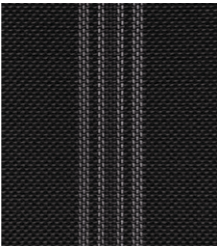
SE Cloth
Woven Gray



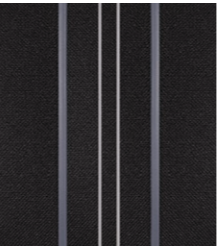
SEL Cloth
Tricot Gray



Limited Leather-Trimmed
Melange/Gray



SE Cloth
Woven Black



SEL Cloth
Tricot Black

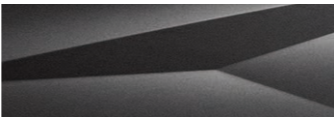


Limited Leather-Trimmed
Black

Exterior Colors



Quartz White



Portofino Gray



Calypso Red / Scarlet Red Pearl



Electric Shadow



Intense Blue



Lava Orange



Shimmering Silver / Fluid Metal



Phantom Black

ELANTRA

	SE	SEL	Limited
Power & Handling			
147 hp/132 lb-ft, 2.0L Atkinson Cycle 4-cylinder engine	●	●	●
Idle Stop & Go	●	—	—
Smartstream Intelligent Variable Transmission	●	●	●
Electronic Parking Brake	—	●	●
Motor Driven Power Steering	●	●	●
Drive Mode Select	●	●	●
4-wheel disc brakes	●	●	●
Exterior Features			
Chrome grille	●	●	—
Dark chrome exterior accents/chrome window belt molding	—	●	●
Solar control glass	●	●	●
Automatic headlights and LED Daytime Running Lights	●	●	●
High Beam Assist	●	●	●
Projector headlights	●	●	—
High/low-beam LED headlights	—	—	●
LED taillights	—	●	●
Bodycolor door handles	●	●	●
Two-tone dual power side mirrors	●	●	●
Heated side mirrors	—	●	●
Side mirrors with LED turn signal indicators	—	●	●
Rearview camera with dynamic parking guidelines	●	●	●
Power tilt-and-slide sunroof	—	●	●
Hands-free smart trunk release	—	●	●
Interior Features			
Remote keyless entry system with alarm	●	—	—
Proximity Key entry with push button start	—	●	●
4.2” color LCD multi-information display	●	●	—
10.25” digital instrument cluster display	—	●	●
Tilt-and-telescopic steering wheel with audio controls	●	●	●
Cruise control	●	●	—
Smart Cruise Control with Stop & Go	—	●	●
Dual automatic temperature control	—	●	●
Leather-wrapped steering wheel and shift knob	—	●	●
Heated front seats	—	●	●
6-way adjustable driver seat including height adjustment	●	●	—
Power driver seat with adjustable lumbar support	—	●	●
Cloth seating surfaces	●	●	—
Leather-trimmed seating surfaces	—	—	●
60/40 split-folding rear seats with armrest and cupholders	—	●	●
Front passenger seatback pocket	—	●	●
Sunvisors with illuminated vanity mirror and extension	—	●	●
Auto-dimming rearview mirror with HomeLink®	—	—	●
Ambient LED interior lighting (adjustable – 64 colors)	—	—	●

ELANTRA

	SE	SEL	Limited
Advanced Safety			
Forward Collision-Avoidance Assist with Pedestrian Detection	●	●	—
Forward Collision-Avoidance Assist with Pedestrian, Cyclist and Junction-Turning Detection	—	●	●
Lane Keeping Assist and Lane Following Assist	●	●	●
Driver Attention Warning	●	●	●
Blind-Spot Collision-Avoidance Assist	●	●	●
Rear Cross-Traffic Collision-Avoidance Assist	●	●	●
Safe Exit Warning and Rear Occupant Alert	●	●	●
Parking Distance Warning – Reverse	—	—	●
Parking Collision-Avoidance Assist – Reverse	—	—	●
Highway Driving Assist	—	—	●
Audio & Connected Car Technology			
8” touchscreen display AM/FM/HD Radio™ with 4 speakers	●	—	—
8” touchscreen display AM/FM/SiriusXM Satellite Radio and HD Radio™ with 6 speakers	—	●	—
10.25” high-resolution touchscreen navigation system with AM/FM/SiriusXM Satellite Radio and HD Radio™	—	—	●
Bose® 8-speaker premium audio system	—	●	●
Apple CarPlay® and Android Auto™ (wireless wired)	● —	● —	— ●
Bluetooth® hands-free phone with audio streaming	●	●	●
Wireless charging pad (Qi format)	—	●	●
Blue Link® Connected Car System (3 years complimentary)	—	●	●
Dynamic Voice Recognition	—	—	●
Hyundai Digital Key	—	●	●
Dual USB ports (1 charging / 1 charging + data)	●	●	●

● Standard ● Convenience Package ● Premium Package — Not Available

Exterior & Interior Dimensions	ELANTRA
Wheelbase	107.1 in
Overall Length	184.1 in
Overall Width	71.9 in
Overall Height	55.7 in
Headroom – front (with sunroof) / rear	40.6 (38.7) / 37.3 in
Legroom – front / rear	42.3 / 38.0 in
Total Interior Volume	113.6 cu ft
Cargo (Trunk) Volume	14.2 cu ft

Wheels



SE
15” Alloy Wheel

SEL
16” Alloy Wheel

Limited
17” Alloy Wheel





Hyundai Hope On Wheels®

Helping Kids Fight Cancer Since 1998



Hope makes every Hyundai better.

Each time we sell a Hyundai, a portion goes to Hyundai Hope On Wheels® to help find a cure for childhood cancer. Over the last 22 years, Hyundai Hope On Wheels has donated more than \$172 million. Hope is our greatest feature. And it comes standard on every Hyundai. For more information, please visit HyundaiHopeOnWheels.org.



America's Best Warranty

POWERTRAIN
LIMITED WARRANTY

10 YEARS 100,000 MILES

NEW VEHICLE
LIMITED WARRANTY

5 YEARS 60,000 MILES

ANTI-PERFORATION
WARRANTY

7 YEARS UNLIMITED MILES

24/7 ROADSIDE
ASSISTANCE

5 YEARS UNLIMITED MILES



Hyundai
Complimentary
Maintenance

Complimentary maintenance includes Hyundai-approved oil and oil filter change (except for electric vehicles and fuel cell electric vehicles) plus tire rotation at normal factory-scheduled intervals for 3 years or 36,000 miles, whichever comes first. This offer valid only for new 2020-2021 Hyundai models purchased or leased on or after February 1, 2020. See your Hyundai dealer for further details and limitations.

HYUNDAI
Assurance

HYUNDAIASSURANCE.COM

Our commitment to Hyundai owners does not end with the transfer of keys. Wherever the road takes you, we've got your back with Hyundai Assurance, an umbrella of services and benefits that includes America's Best Warranty, 24/7 Roadside Assistance, innovative safety and car care features...and more.

See dealer for LIMITED WARRANTY details. Fuel economy estimated by EPA for comparison only. Mileage may vary. While the information contained in this brochure was correct at the time of printing, specifications and equipment can change. Feature comparisons based on competitor information available at the time of printing. No warranty or guarantee is being extended in this brochure, and Hyundai reserves the right to change product specifications and equipment at any time without incurring obligations. Some vehicles are shown with optional equipment. Specifications apply to U.S. vehicles only. Please contact your Hyundai dealer for current vehicle specifications. As part of Hyundai's commitment to a responsible environment, this brochure was printed using paper certified by the Forest Stewardship Council®. FSC® certification helps ensure that the highest social and environmental standards are met in the making of the paper we use, contributing to conservation, responsible management and community-level benefits for people near the forests.



©2020 HYUNDAI NP02082021

DEALER ePROCESS